

CONTEX III

TYPE I CONTRACT VINYL WALLCOVERING

UNI⁺WAL

CONTEX III

TYPE I CONTRACT VINYL WALLCOVERING

PHYSICAL PROPERTIES

Weight: 15 oz/yd, 340 g/m²

Width: 1.32m - 1.37m

Lenth: 30m per roll

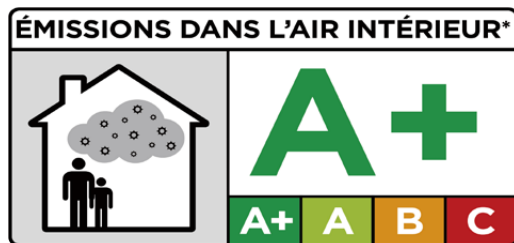
Composition: Vinyl film surface, Osnaburg backing,
Printed with water based ink

ENVIRONMENTAL & HEALTH

Contex provides Type I fabric-backed vinyl wallcoverings that are designed with environmental responsibility and user safety in mind. The products are manufactured with **low VOC formulations** and **water-based inks**, ensuring healthier indoor air quality. They are free from heavy metals and substances of very high concern (SVHC), such as lead, mercury, cadmium, and chromium.

All products have been tested and certified to meet international standards, including:

- . **Heavy Metals & SVHC Regulations:** EN 15102, REACH SVHC
- . **Low VOC Standards:** CA 01350, French A+
- . **CE Declaration of Conformity:** Fully compliant upon satisfying the above requirements



FIRE & SAFETY

This product complies with internationally recognized fire safety standards and fulfills the requirements for use in public and commercial spaces.

- . **EN 13501-1:** Class B-s1-d0
- . **ASTM E-84:** Class A

Key Features & Benefits

- . Fire Resistance
- . Low VOC & Environmental Friendliness
- . Anti-Microbial Property
- . Colorfastness
- . Scratch Resistance & Durability
- . Strippability
- . Washability

Available Customizations (subject to MOQ 1,000 m and additional cost)

- . Custom Colors & Weight Options
- . Perforation
- . Protective Films

Installation Guidelines

- . Follow the hanging instructions supplied with each roll.
- . Apply the **overlap-and-double-cut** method during installation.
- . Adhesive must include an effective fungicide.
- . Install rolls in the correct numerical sequence.

Batching

To avoid slight color variations, ensure that rolls used within the same area are from the same production batch.

Memo Samples

Memo samples (A4 size) can be provided upon request to support design selection, color matching, and material evaluation.



Roll Size: 1.32 m - 1.37 m

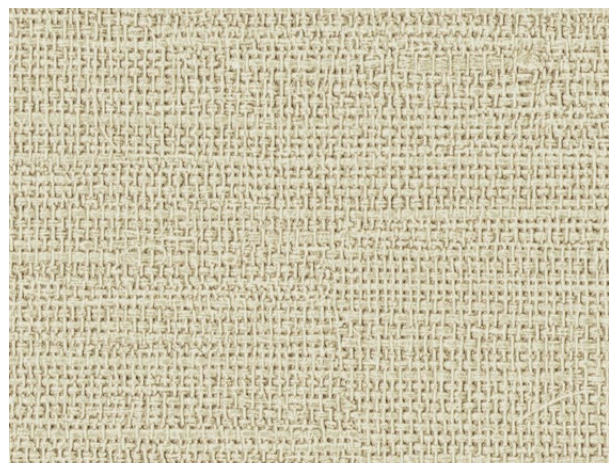
Weight : 15 oz/yd

Pattern Match: →|← 64 cm

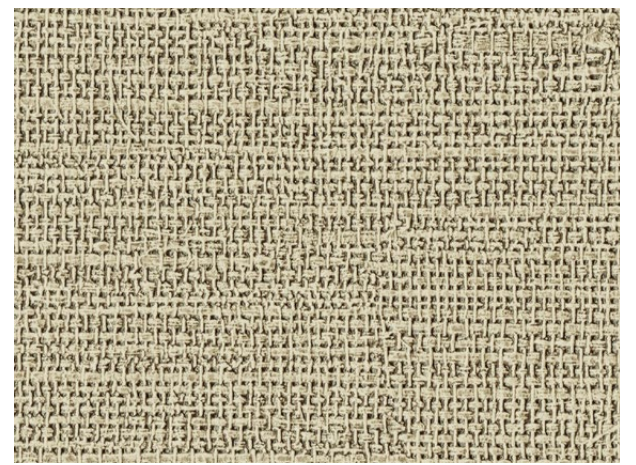
Backing: Osnaburg



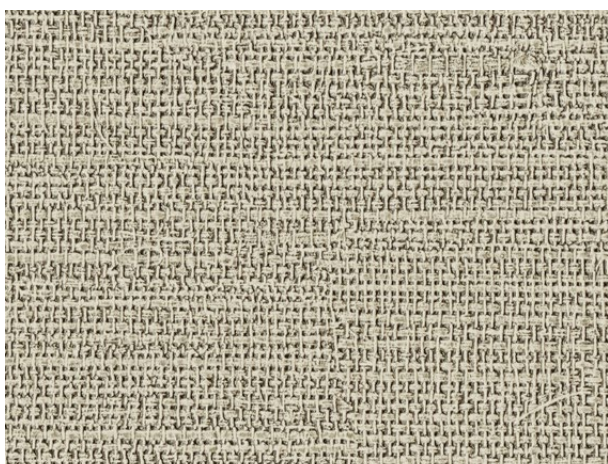
Pateren No. : CT3000



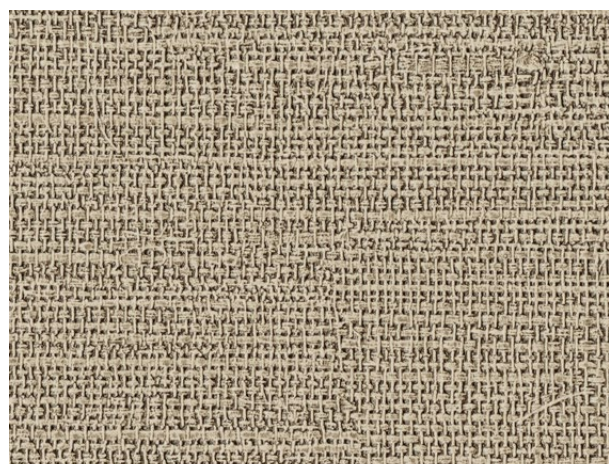
Pateren No. : CT3001



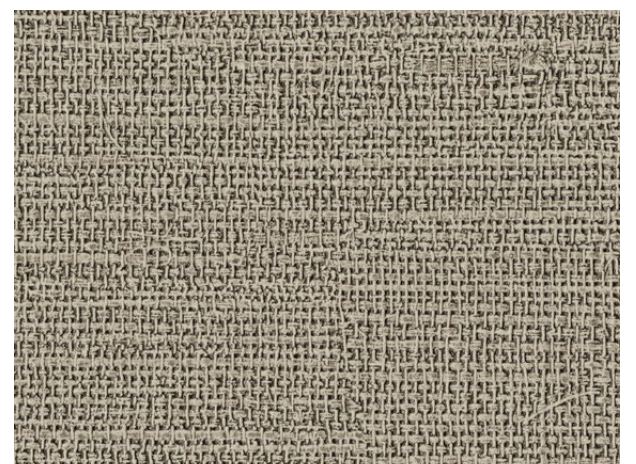
Pateren No. : CT3002



Pateren No. : CT3003



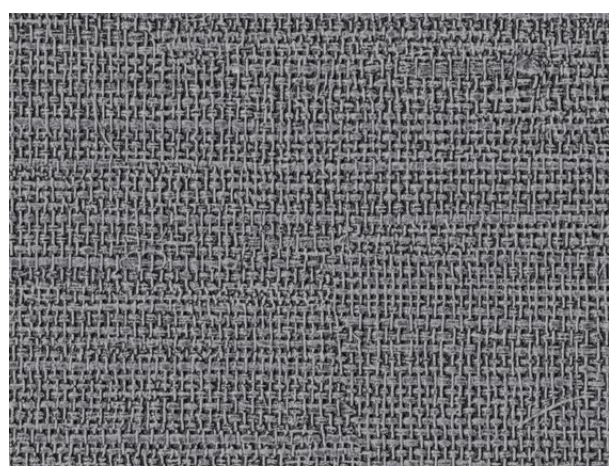
Pateren No. : CT3004



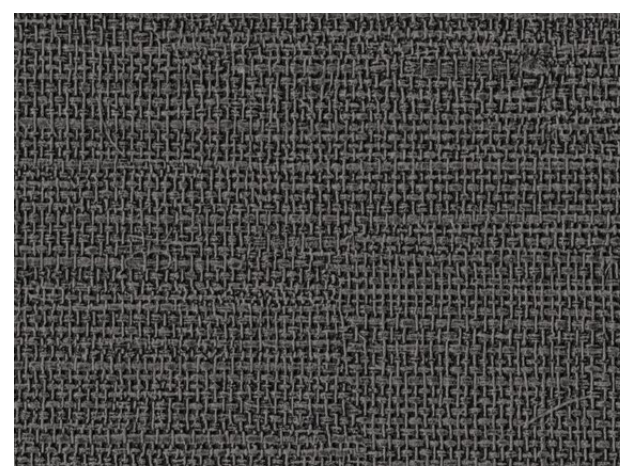
Pateren No. : CT3005



Pateren No. : CT3006



Pateren No. : CT3007



Pateren No. : CT3008



CT3001

Roll Size: 1.32 m - 1.37 m

Weight : 15 oz/yd

Pattern Match: Reverse Random

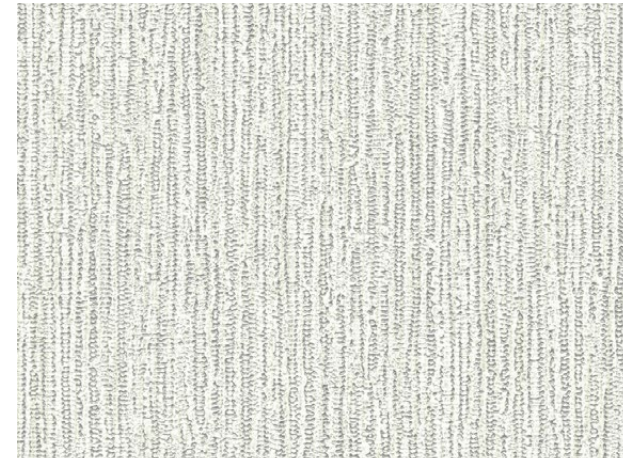
Backing: Osaburg



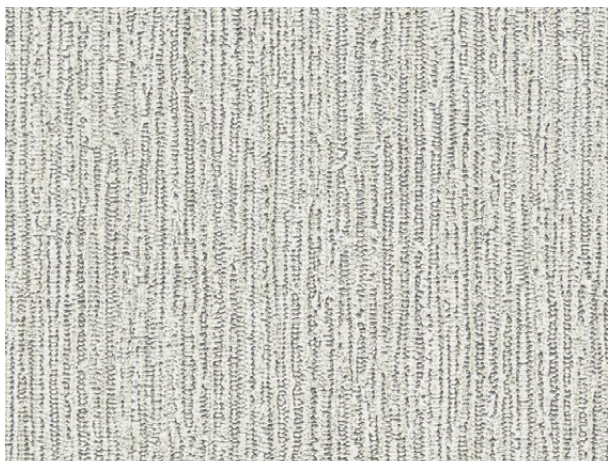
Pateren No. : CT3009



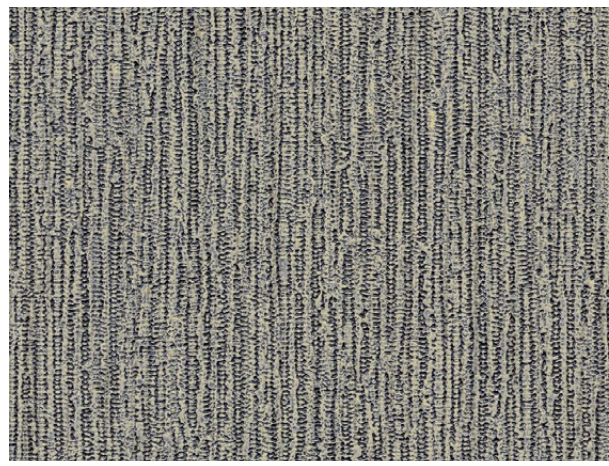
Pateren No. : CT3010



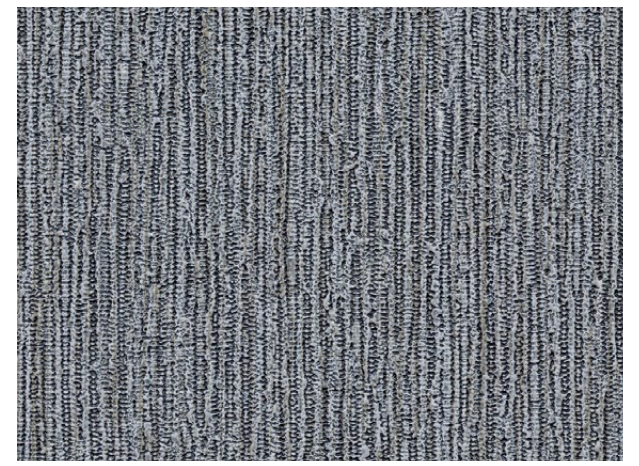
Pateren No. : CT3011



Pateren No. : CT3012



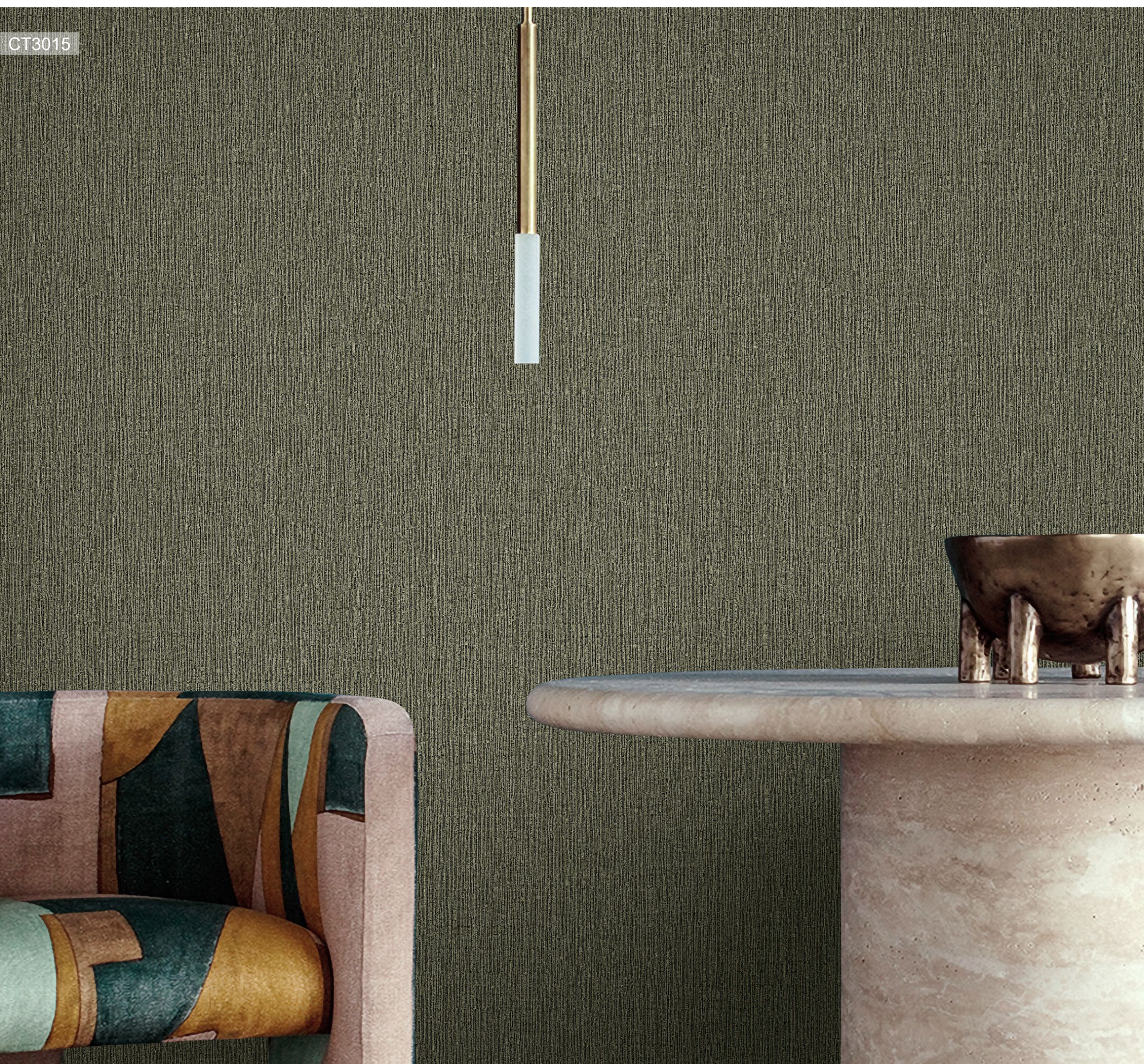
Pateren No. : CT3013



Pateren No. : CT3014



Pateren No. : CT3015



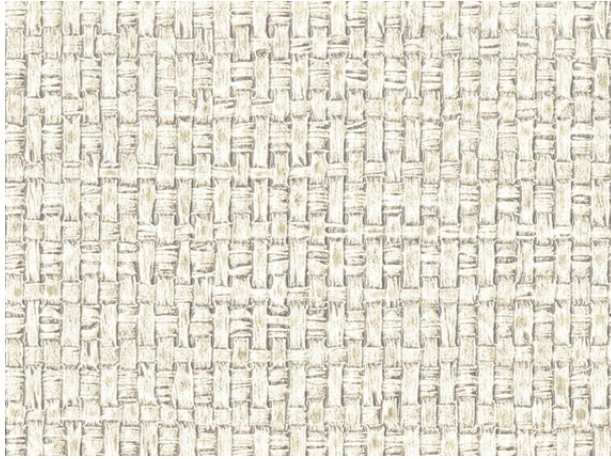
CT3015

Roll Size: 1.32 m - 1.37 m

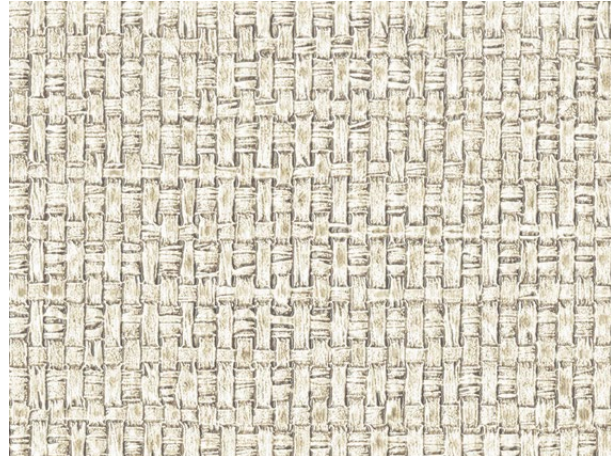
Weight : 15 oz/yd

Pattern Match: Reverse Random

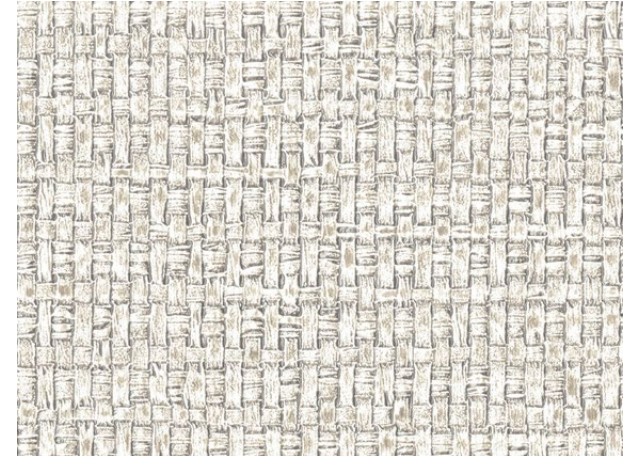
Backing: Osnaburg



Pateren No. : CT3016



Pateren No. : CT3017



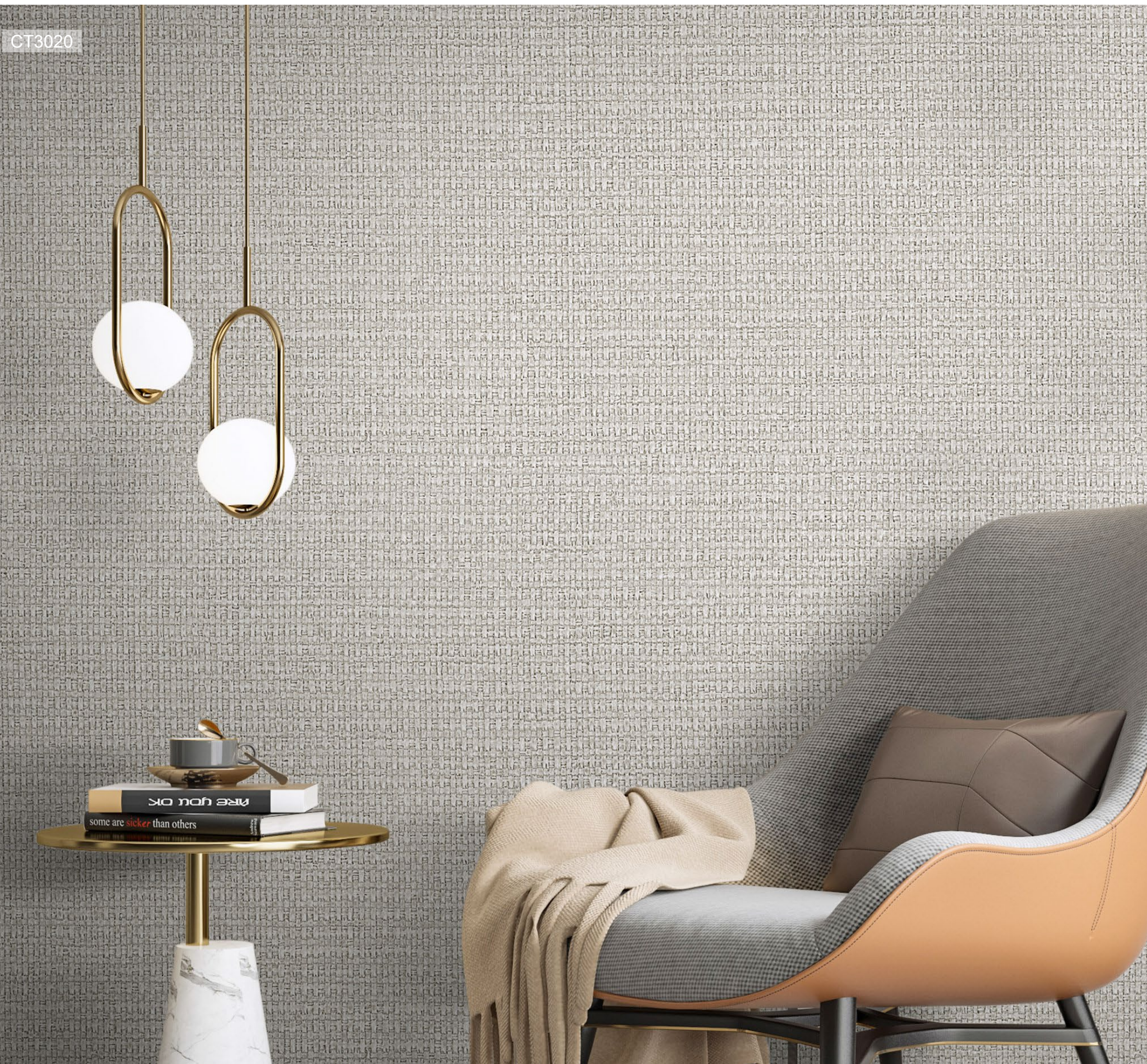
Pateren No. : CT3018



Pateren No. : CT3019



Pateren No. : CT3020

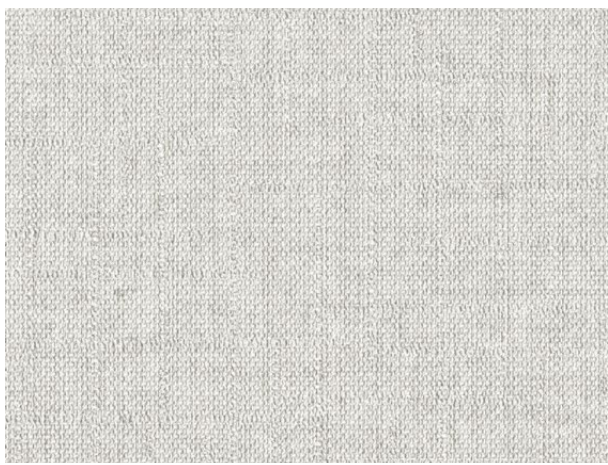


Roll Size: 1.32 m - 1.37 m

Weight : 15 oz/yd

Pattern Match: Reverse Random

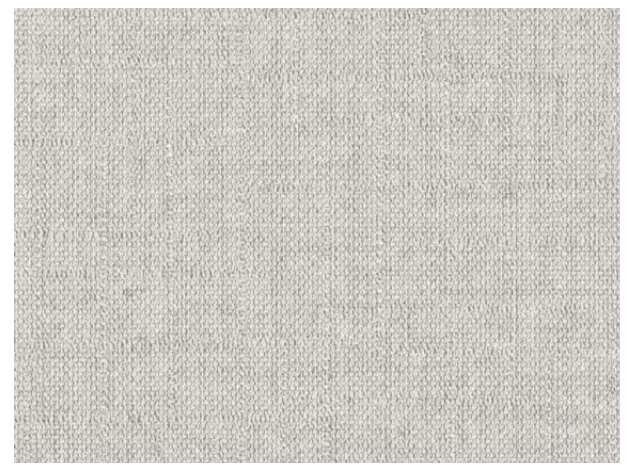
Backing: Osnaburg



Pateren No. : CT3021



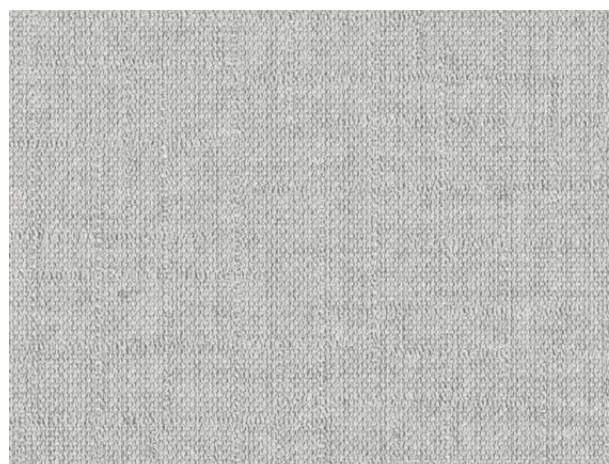
Pateren No. : CT3022



Pateren No. : CT3023



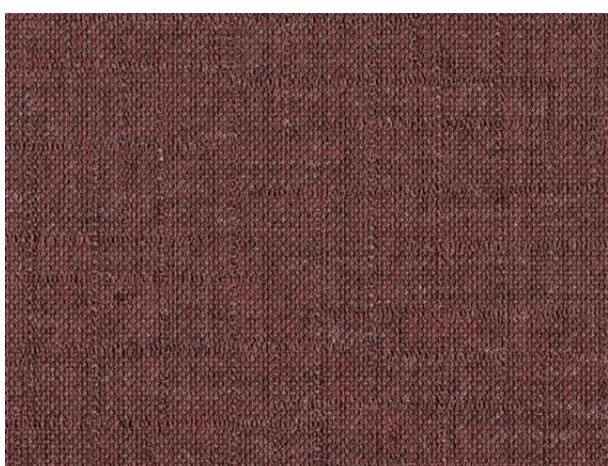
Pateren No. : CT3024



Pateren No. : CT3025



Pateren No. : CT3026



Pateren No. : CT3027

CT3027



Roll Size: 1.32 m - 1.37 m

Weight : 15 oz/yd

Pattern Match: Reverse Random

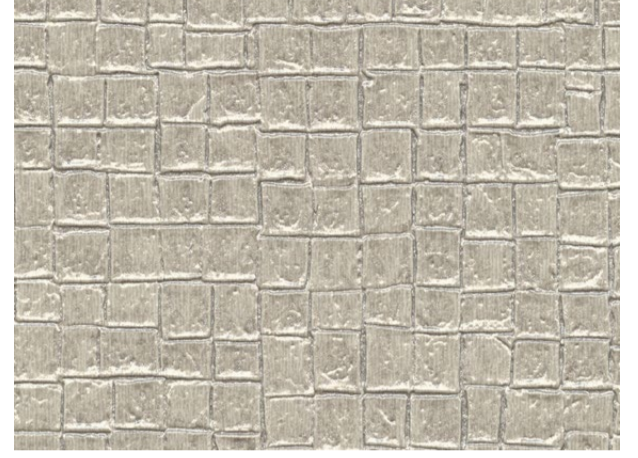
Backing: Osaburg



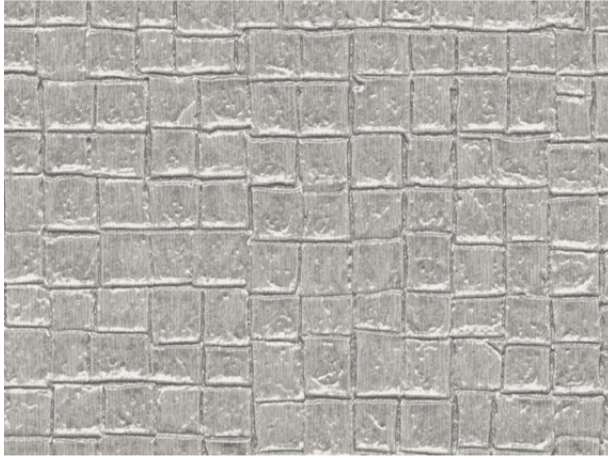
Pateren No. : CT3028



Pateren No. : CT3029



Pateren No. : CT3030



Pateren No. : CT3031

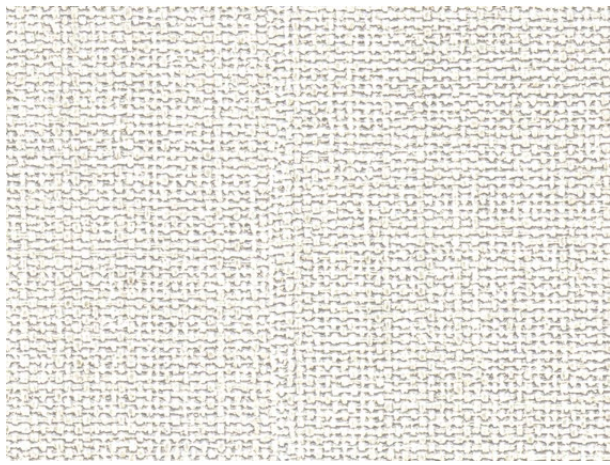


Roll Size: 1.32 m - 1.37 m

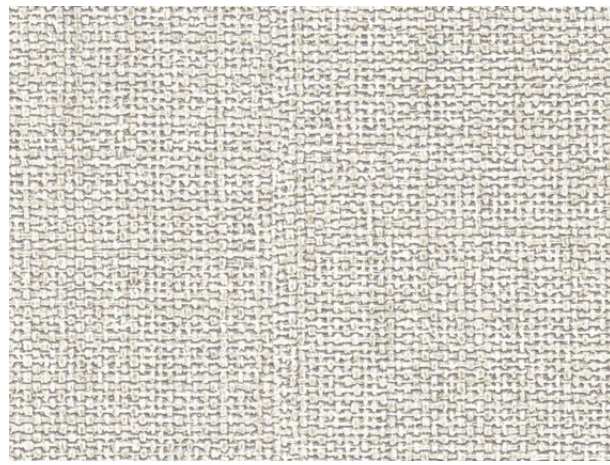
Weight : 15 oz/yd

Pattern Match: Reverse Random

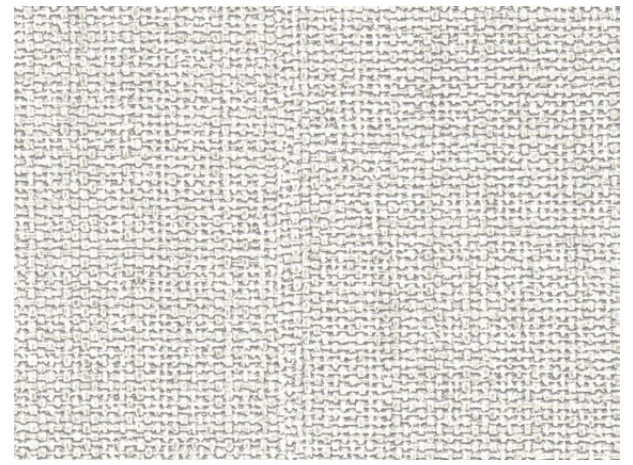
Backing: Osnaburg



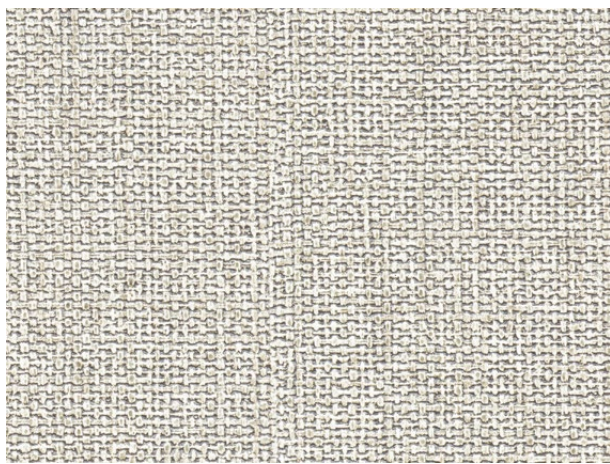
Pateren No. : CT3032



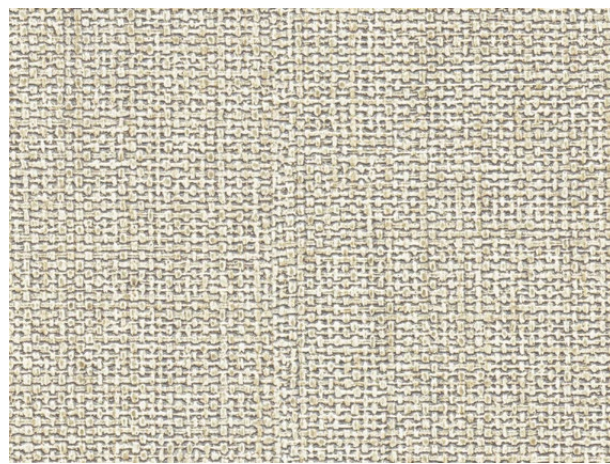
Pateren No. : CT3033



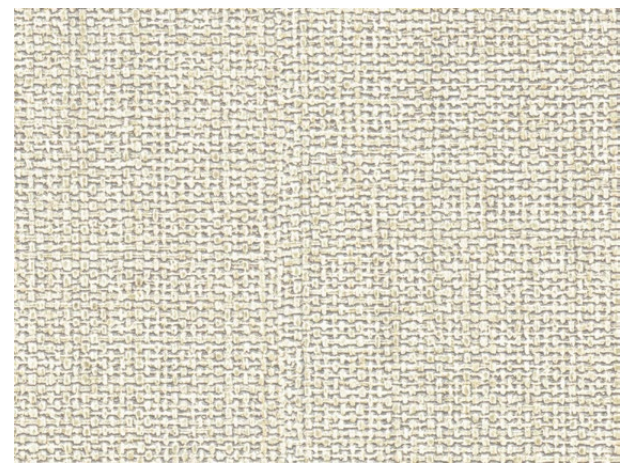
Pateren No. : CT3034



Pateren No. : CT3035



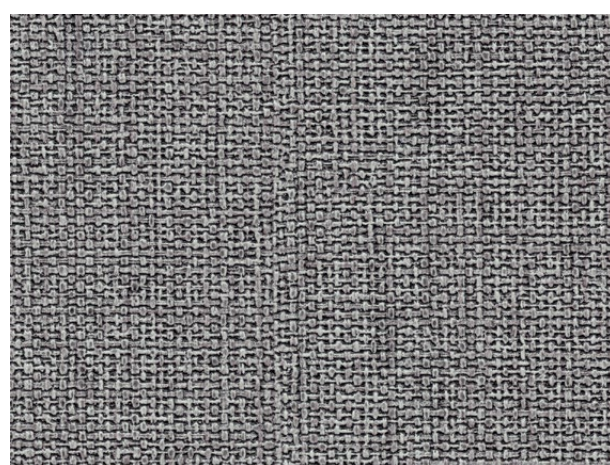
Pateren No. : CT3036



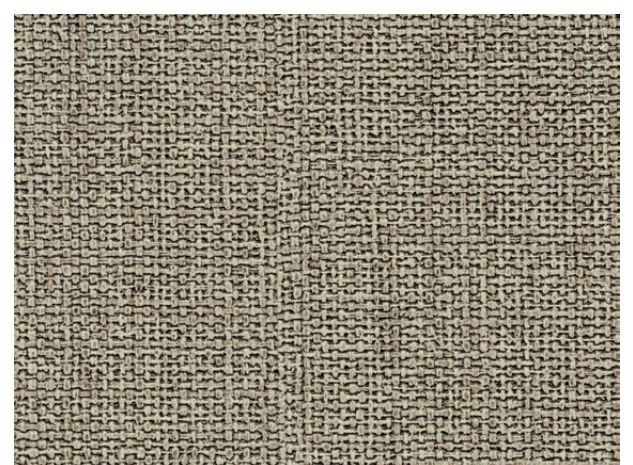
Pateren No. : CT3037



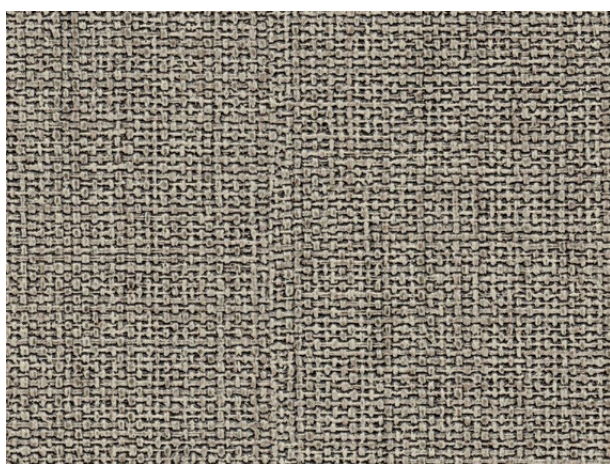
Pateren No. : CT3038



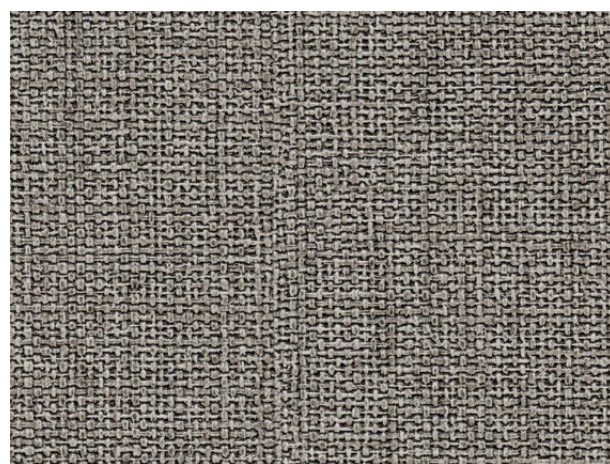
Pateren No. : CT3039



Pateren No. : CT3040



Pateren No. : CT3041



Pateren No. : CT3042



CONTEX III

TYPE I CONTRACT VINYL WALLCOVERING

Page No.	Pattern No.	Backing	Roll Size	Weight (oz/yd)	Pattern Repeat (cm)		Pattern Match	Eco-Friendly	Fire Rating	
					Horizontal	Vertical			ASTM E 84	EN13501-1
1	CT3000	Osnaburg	1.32 m -1.37 m * 30 m	15	64	0	→ ←	Low VOC	Rate A	B,s1,d0
2	CT3001	Osnaburg	1.32 m -1.37 m * 30 m	15	64	0	→ ←	Low VOC	Rate A	B,s1,d0
3	CT3002	Osnaburg	1.32 m -1.37 m * 30 m	15	64	0	→ ←	Low VOC	Rate A	B,s1,d0
4	CT3003	Osnaburg	1.32 m -1.37 m * 30 m	15	64	0	→ ←	Low VOC	Rate A	B,s1,d0
5	CT3004	Osnaburg	1.32 m -1.37 m * 30 m	15	64	0	→ ←	Low VOC	Rate A	B,s1,d0
6	CT3005	Osnaburg	1.32 m -1.37 m * 30 m	15	64	0	→ ←	Low VOC	Rate A	B,s1,d0
7	CT3006	Osnaburg	1.32 m -1.37 m * 30 m	15	64	0	→ ←	Low VOC	Rate A	B,s1,d0
8	CT3007	Osnaburg	1.32 m -1.37 m * 30 m	15	64	0	→ ←	Low VOC	Rate A	B,s1,d0
9	CT3008	Osnaburg	1.32 m -1.37 m * 30 m	15	64	0	→ ←	Low VOC	Rate A	B,s1,d0
10	CT3009	Osnaburg	1.32 m -1.37 m * 30 m	15	0	0	→ o	Low VOC	Rate A	B,s1,d0
11	CT3010	Osnaburg	1.32 m -1.37 m * 30 m	15	0	0	→ o	Low VOC	Rate A	B,s1,d0
12	CT3011	Osnaburg	1.32 m -1.37 m * 30 m	15	0	0	→ o	Low VOC	Rate A	B,s1,d0
13	CT3012	Osnaburg	1.32 m -1.37 m * 30 m	15	0	0	→ o	Low VOC	Rate A	B,s1,d0
14	CT3013	Osnaburg	1.32 m -1.37 m * 30 m	15	0	0	→ o	Low VOC	Rate A	B,s1,d0
15	CT3014	Osnaburg	1.32 m -1.37 m * 30 m	15	0	0	→ o	Low VOC	Rate A	B,s1,d0
16	CT3015	Osnaburg	1.32 m -1.37 m * 30 m	15	0	0	→ o	Low VOC	Rate A	B,s1,d0
17	CT3016	Osnaburg	1.32 m -1.37 m * 30 m	15	0	0	→ o	Low VOC	Rate A	B,s1,d0
18	CT3017	Osnaburg	1.32 m -1.37 m * 30 m	15	0	0	→ o	Low VOC	Rate A	B,s1,d0
19	CT3018	Osnaburg	1.32 m -1.37 m * 30 m	15	0	0	→ o	Low VOC	Rate A	B,s1,d0
20	CT3019	Osnaburg	1.32 m -1.37 m * 30 m	15	0	0	→ o	Low VOC	Rate A	B,s1,d0
21	CT3020	Osnaburg	1.32 m -1.37 m * 30 m	15	0	0	→ o	Low VOC	Rate A	B,s1,d0
22	CT3021	Osnaburg	1.32 m -1.37 m * 30 m	15	0	0	→ o	Low VOC	Rate A	B,s1,d0
23	CT3022	Osnaburg	1.32 m -1.37 m * 30 m	15	0	0	→ o	Low VOC	Rate A	B,s1,d0
24	CT3023	Osnaburg	1.32 m -1.37 m * 30 m	15	0	0	→ o	Low VOC	Rate A	B,s1,d0
25	CT3024	Osnaburg	1.32 m -1.37 m * 30 m	15	0	0	→ o	Low VOC	Rate A	B,s1,d0
26	CT3025	Osnaburg	1.32 m -1.37 m * 30 m	15	0	0	→ o	Low VOC	Rate A	B,s1,d0
27	CT3026	Osnaburg	1.32 m -1.37 m * 30 m	15	0	0	→ o	Low VOC	Rate A	B,s1,d0
28	CT3027	Osnaburg	1.32 m -1.37 m * 30 m	15	0	0	→ o	Low VOC	Rate A	B,s1,d0
29	CT3028	Osnaburg	1.32 m -1.37 m * 30 m	15	0	0	→ o	Low VOC	Rate A	B,s1,d0
30	CT3029	Osnaburg	1.32 m -1.37 m * 30 m	15	0	0	→ o	Low VOC	Rate A	B,s1,d0
31	CT3030	Osnaburg	1.32 m -1.37 m * 30 m	15	0	0	→ o	Low VOC	Rate A	B,s1,d0
32	CT3031	Osnaburg	1.32 m -1.37 m * 30 m	15	0	0	→ o	Low VOC	Rate A	B,s1,d0
33	CT3032	Osnaburg	1.32 m -1.37 m * 30 m	15	0	0	→ o	Low VOC	Rate A	B,s1,d0
34	CT3033	Osnaburg	1.32 m -1.37 m * 30 m	15	0	0	→ o	Low VOC	Rate A	B,s1,d0
35	CT3034	Osnaburg	1.32 m -1.37 m * 30 m	15	0	0	→ o	Low VOC	Rate A	B,s1,d0
36	CT3035	Osnaburg	1.32 m -1.37 m * 30 m	15	0	0	→ o	Low VOC	Rate A	B,s1,d0
37	CT3036	Osnaburg	1.32 m -1.37 m * 30 m	15	0	0	→ o	Low VOC	Rate A	B,s1,d0
38	CT3037	Osnaburg	1.32 m -1.37 m * 30 m	15	0	0	→ o	Low VOC	Rate A	B,s1,d0
39	CT3038	Osnaburg	1.32 m -1.37 m * 30 m	15	0	0	→ o	Low VOC	Rate A	B,s1,d0
40	CT3039	Osnaburg	1.32 m -1.37 m * 30 m	15	0	0	→ o	Low VOC	Rate A	B,s1,d0
41	CT3040	Osnaburg	1.32 m -1.37 m * 30 m	15	0	0	→ o	Low VOC	Rate A	B,s1,d0
42	CT3041	Osnaburg	1.32 m -1.37 m * 30 m	15	0	0	→ o	Low VOC	Rate A	B,s1,d0
43	CT3042	Osnaburg	1.32 m -1.37 m * 30 m	15	0	0	→ o	Low VOC	Rate A	B,s1,d0